

MARK: \_\_\_\_\_

PROJECT: \_\_\_\_\_

DATE: \_\_\_\_\_



**Centri-Vane All Aluminum  
Centrifugal Blower  
Exhaust or Supply Roof  
Mounted/Belt Drive**

**DIMENSION DATA**

Size	A	B	C	D	E	F	G	T	Shaft Dia.	Wheel Dia.	Ga. of Mat'l housing/base	Ship Wt. less Mtr.
10	20-1/8	4-5/8	15-1/2	16-3/16	15	18-1/8	2	20	3/4	12-15/16	.080/.080	92
12	22-1/8	5	17-1/8	19-1/8	15	27-15/16	2	20	1	15-9/16	.100/.080	98
14	24-1/8	5	19-1/8	22	16	27-15/16	2	24	1	18-1/4	.100/.080	121
16	26-9/16	5	21-9/16	24-7/8	17	27-15/16	2	24	1	20-15/16	.100/.080	143
18	29-1/2	5	24-1/2	27-3/4	19	27-15/16	2	28	1	23-9/16	.100/.080	208
20	33-1/4	6-3/4	26-1/2	30-1/2	19	36	2	28	1	26-1/4	.100/.080	274
24	38-1/8	6-3/4	31-3/8	36-1/2	21	36	3	32	1-3/16	31-9/16	.100/.080	369
28	44	8	36	42	29	42-1/8	3	36	1-11/16	36-7/8	.100/.080	491
32	57-7/8	17	40-7/8	48	30	52	3	42	1-11/16	42-3/16	.125/.080	625
36	61-1/2	17-1/2	44	53-3/8	32	62	3	48	1-15/16	47-1/2	.125/.080	767

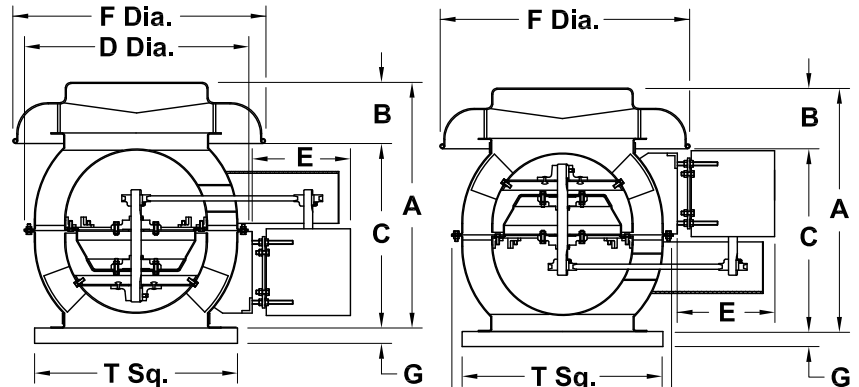
ALL DIMENSIONS IN INCHES. WEIGHTS IN LBS. DRIVES THROUGH 5 H.P. ARE ALL VARIABLE PITCH.

**STANDARD CONSTRUCTION FEATURES:**

All aluminum construction - Spun aluminum top cap with built in air deflector - Weather cover - Straightening vanes - Regreasable bearings in a cast housing rated at 200,000 hours average life - Extended lube lines - Bearings and belts out of the airstream - Static resistant belts - Supply fan can be used for stair well pressurization - All fans factory adjusted to specified fan RPM - Five year fan warranty.

**ACCESSORIES**

1. DISCONNECT SWITCH
2. RCG GALVANIZED CURB
3. RCA ALUMINUM CURB
4. EPOXY COATING


**CVR**
**CVR-S**

QTY	MARK	CATALOG NUMBER	FAN INFORMATION			MOTOR INFORMATION					ACCESSORIES								
			CFM	SP	RPM	HP	VOLTS	HZ	PH	TYPE									