

DATE: \_\_\_\_\_

PROJECT: \_\_\_\_\_

LOCATION: \_\_\_\_\_



**Hooded Low-Contour Downblast  
Centrifugal exhaust Ventilator  
Roof Mounted/Direct Drive**


**DIMENSION DATA**

Size	A	B	C	D	G	T Sq.	Unit Wt.**	Roof Opening Sq.*
70	16-1/2	4-1/4	31-1/4	34-1/8	2	18	48	13-1/2
90	17	4-3/4	31-1/4	34-1/8	2	18	49	13-1/2
100	17	4-3/4	31-1/4	34-1/8	2	18	49	13-1/2
120	21-5/8	5-7/8	34-3/4	35-1/8	2	20	63	15-1/2
135	21-7/8	6-1/8	34-3/4	35-1/8	2	20	64	15-1/2
150	23-1/4	7-1/4	40-1/8	42-1/8	2	24	80	19-1/2
165	23-3/8	7-3/8	40-1/8	42-1/8	2	24	80	19-1/2
180	26-1/4	8-1/4	43-7/8	47-1/8	3	30	94	25-1/2

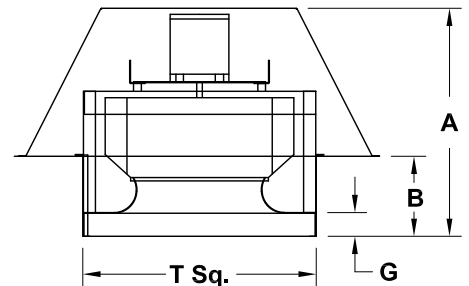
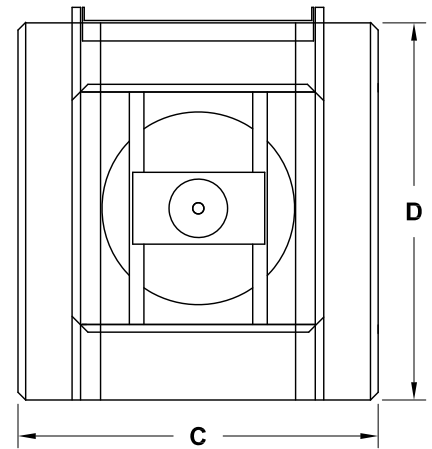
ALL DIMENSIONS IN INCHES. WEIGHTS IN LBS.

\* ROOF OPENING SIZE FOR CURBS SUPPLIED BY COOK ONLY.

**ACCESSORIES**

1. DISCONNECT SWITCH
2. FAN SPEED CONTROL
3. GRAVITY BACKDRAFT DAMPER
4. MOTORIZED BACKDRAFT DAMPER
5. RCG GALVANIZED CURB
6. RCA ALUMINUM CURB
7. EPOXY COATING
8. ANTI-CONDENSATE COATING
9. LESS BIRDSCREEN
10. SPECIAL

**\*\*Note:** Weight does not include motor. Fan must have a motor weight added for unit operating weight.


**STANDARD CONSTRUCTION FEATURES:**

All aluminum housing - Backward inclined all aluminum wheel - Welded curb cap corners - Hinged access hood - Birdscreen - Vibration isolators - Permanently lubricated ball bearing motors - Corrosion resistant fasteners.

QTY	MARK	CATALOG NUMBER	FAN INFORMATION			MOTOR INFORMATION					ACCESSORIES	
			CFM	SP	RPM	HP	VOLTS	HZ	PH	TYPE		

**MOTOR TYPE:** ODP (OPEN DRIP-PROOF); 2 SP (2 SPEED); X-PRF (EXPLOSION PROOF); TEFC (TOTALLY ENCLOSED FAN COOLED).